

The Burkes Pass Heritage Trust Newsletter

August 2012



**Did you know we had one?
Has anyone got memories or photos they
could share?**

The old rink is tucked into the small gorge behind St Patrick's Church. It has been used since the early winter days of the 1800's and the fun recorded in several family histories. Revived as a community amenity at various times, the Burkes Pass Hotelier developed the rink in the 1950-60's and social teams played ice hockey on it apparently.

In 1993, the rink was re-opened by Kelvin Leslie, who installed a small heated hut with about 50 pairs of skates of various sizes and hockey sticks, put up floodlights and Allan Marshall from the shop groomed the ice. For a few years many an enjoyable session was had by adults and children on a mid winter night with a hot drink afterward. Curling stones even made an appearance.

The Trust has had discussion with landowners, Michelle and Steve Allan, who have kindly allowed us to bring this amazing old facility back to life again for use of the local community. Access will be by arrangement and hopefully will be ready for use in winter 2013, weather permitting. This is quite a major undertaking for the Trust, however the basic form is still intact, the site has been mowed and broom cut back (thanks to Peter, Neville, and Graham), and careful work by hand and a digger has re-established the control over water flow and drainage. In fact it froze over for a short time in July. Whoo-hoo!

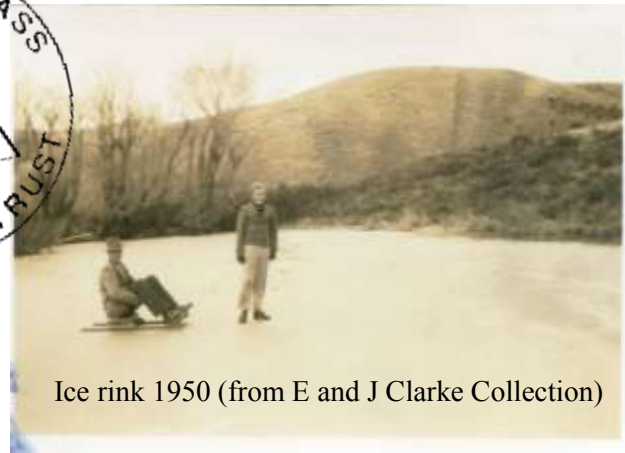
St Patrick's Church -140 years Old.

On the 18th of August this year St Patrick's reached its 140th anniversary. We have some celebrating to do and we hope to mark the occasion on a date to be arranged later this year.

"A public meeting was held at Stansell's accommodation house (hotel) on Saturday the 26th of August 1871 to take steps for the erection of a building to be licensed for Divine Service Mr. Burgess having given the land for the site." This founding set of minutes was recorded in copperplate handwriting in an emerald green leather and gilt-edged notebook, now in the Anglican Archives.

Engineer, W. Williamson, in the Timaru Herald called for tenders and "the sum of 160 pounds was raised, and a very pretty little building ... capable of seating fifty persons was erected." The church was opened on the **18th of August 1872** with a morning service (Church of England) at 10.30 am by the Rev. W.H. Cooper and in the afternoon at 2.30 pm a Church of Scotland (Presbyterian) service by the Rev. G Barclay.

The Church News, Sept 1872 tells, *"the weather was very severe. (Three feet of snow lying on the ground a little beyond the Pass), a congregation of forty-two persons assembled some of whom had ridden more than thirty miles to attend. The service was very hearty: The Venite, Te Deum, and Jubilate, being chanted to Gregorian tones, and appropriate hymns from Hymns Ancient and Modern sung with much spirit; the singing was led by Mrs Kimbell, who evidently had taken great pains in training the choir."*



Ice rink 1950 (from E and J Clarke Collection)



Peter slashing long grass,



Starting to freeze over

Church Windows – a fitting 140th Birthday Present.

The long wait may now be coming to an end. As they say in the cheese advert, 'good things take time'. Graham Stewart has been in demand for many a church window emergency retrieving precious stained glass art works broken or threatened with the Canterbury earthquakes and most recently removing the remaining windows from the Anglican Christchurch Cathedral. He tells me it is a great relief to be able to start making windows again and he has started on ours. He repaired the only remaining original window remnant several years ago and is recreating glass to match the original ones. Some will have a small inscription at the base to dedicate the window as a memorial and one a small wall plaque. **Further inquiries about memorials are very welcome.**



Sibbald Obelisk Re-erected.

The William Sibbald grave memorial has had its large marble column made vertical again, thanks to tireless efforts of Max Willetts and kind assistance from Mike Guerin and his tractor. The column was too tall for previous attempts and the weight made the task rather hazardous, however it is now securely fixed with mortar a central metal rod in position.



Burkes Pass Bullocks – Make Your Own!



A great little card cut out project for children and adults to make and enjoy watching it move. The bullock looks around and nods its head in a life like manner when placed on a shelf where warm air passes or with vibrations of a door closing, such as a fridge. Simple but fascinating and available at the Church or the website shop.

Web site – Our website got a new look earlier this year. We try to put a new picture or video on the front page from time to time. If you have any suggestions or a good photo then please pass on for inclusion. <http://www.burkespass.org.nz>.

Facebook - We also have a face book page which several people have explored. It is a great way to keep up to date with happenings as often you will get an automatic email telling that there is a new item.

Hint: It is useful to hit "like" on a new item as it then propagates to other people and gives it more exposure. <http://www.facebook.com/burkespassht>

Cheers

Jane Batchelor

Postal Address: 41 Kirkwood Avenue, Christchurch 8041

Phone: Burkes Pass 03 685 6271 Christchurch 03 348 1531

Email: jbath@clear.net.nz

Web : <http://www.burkespass.org.nz>.

We do not have a subscription but welcome donations which can be made to bank account 03 1718 0030625 00 Put your name in the reference box. Send an email with your address if you require a tax deductible receipt.